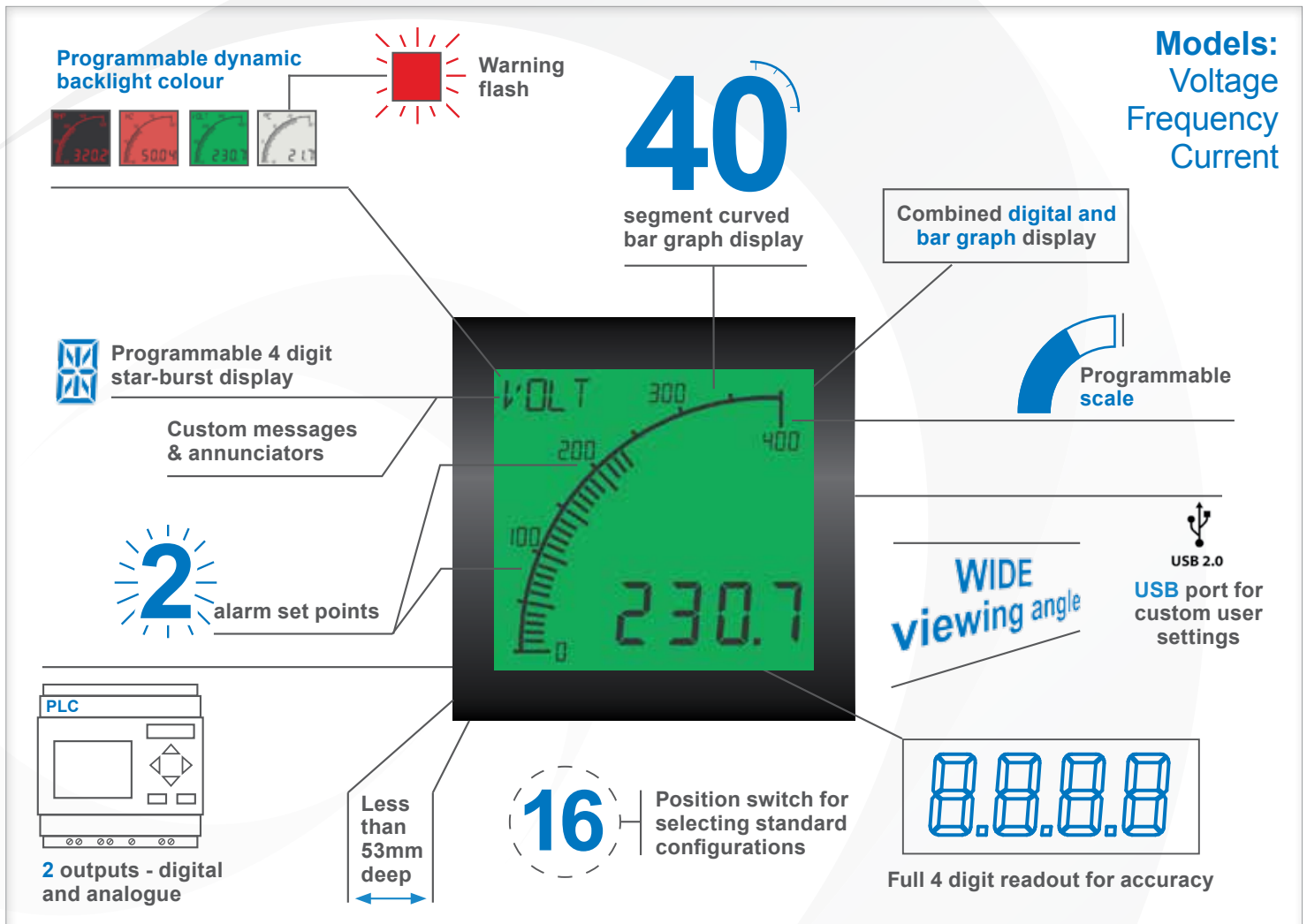


The Next Generation of Panel Meters

Easy to Use. Easy to Read.



Advanced Panel Meter (APM)



The latest innovative Advanced Panel Meter is now available from Trumeter!

The Trumeter APM is the most visible, easy to use, multi-format, programmable panel meter on the market. Providing you with the highest level of accuracy and an immediate visual indication of your critical parameters. The APM has been specifically designed for engineers requiring a more effective way of monitoring and displaying data. The Trumeter APM is a cost-effective alternative to the traditional moving coil and expensive digital panel meters. Trumeter - Revolutionising the future of panel meters.

Key Features

Large multi-format display that incorporates:

- 40 segment bar graph display
- Large 4 digit display
- Separate Starburst display area for annunciators, custom messages and alarm information
- Dynamic backlight colour

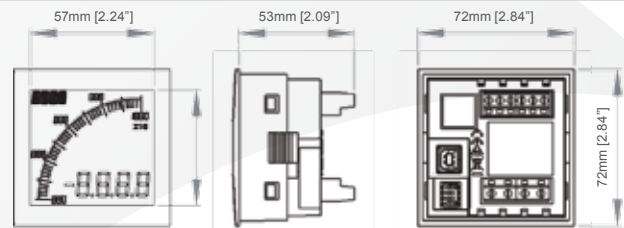
Programmable:

- Scale (offset and gain) and Range (min and max)
- Custom annunciators
- User selectable backlight color and intensity
- Two independent alarm set-points
- Two independent outputs (output models only)
- 4-20mA analogue monitor output (output models only)

Visibility:

- User adjustable backlight brightness and colour
- Large display
- Wide viewing angle (both horizontal and vertical)
- Custom annunciators

Dimensions:

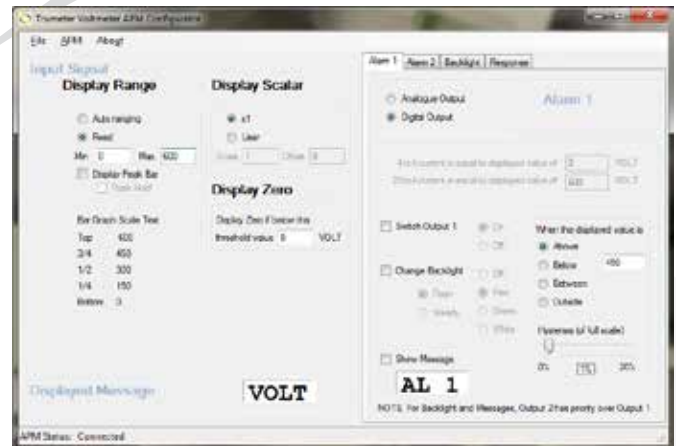


Panel cutout: 68mm x 68mm [2.68" x 2.68"] as per DIN43700/IEC61554

MEASUREMENT	VOLT	AMP	FREQUENCY
Input range (DC)	0 - 600V	0 - 5A	-
Max Using Shunt		1000A	
Input range (AC)	0 - 528V	0 - 5A	0 - 400Hz
Max Using CT		1000A	
Accuracy	1%	1%	0.1%
Display modes		Peak or RMS	
ENVIRONMENTAL			
Temperature - operating		-10 to +60°C	
Temperature - storage		-40 to +70°C	
IP rating (from the front)		IP65	
POWER SUPPLY			
Nominal Input (AC or DC)		12-24 VAC/VDC	
DISPLAY			
Number of digits		4	
Digit height		12mm [0.47"]	
Digit height of annunciator		6mm [0.23"]	
Number of message characters		4	
Backlight colours		Red, Green, White	
LCD display		Positive or Negative	
OUTPUT MODELS			
Max voltage		24V	
Max current		50mA	
Analogue output		4-20mA	
CERTIFICATION			
		UL and cUL (Pending), CE	

Easy To Use Software

Just plug into any USB port on your PC, run the freely available APM Configurator application and you're off. No drivers required.



Part Numbers: (POS LCD = Positive LCD; NEG LCD = Negative LCD)

Volt	Description	Amp	Description	Frequency	Description
APM-VOLT-APN	APM VOLT METER, POS LCD	APM-AMP-APN	APM AMMETER, POS LCD	APM-FREQ-APN	APM FREQ METER, POS LCD
APM-VOLT-APO	APM VOLT METER, POS LCD WITH OUTPUTS	APM-AMP-APO	APM AMMETER, POS LCD WITH OUTPUTS	APM-FREQ-APO	APM FREQ METER, POS LCD WITH OUTPUTS
APM-VOLT-ANN	APM VOLT METER, NEG LCD	APM-AMP-ANN	APM AMMETER, NEG LCD	APM-FREQ-ANN	APM FREQ METER, NEG LCD
APM-VOLT-ANO	APM VOLT METER, NEG LCD WITH OUTPUTS	APM-AMP-ANO	APM AMMETER, NEG LCD WITH OUTPUTS	APM-FREQ-ANO	APM FREQ METER, NEG LCD WITH OUTPUTS
022128-01	USB Cable				

Full specifications available online www.truAPM.com

